



NEW CUPRA  
FORMENTOR





## SELECT YOUR ENGINE

			CO2 WLTP	Fuel Economy WLTP	NOx	VRT Rate	Annual Motor Tax	RRP	ROTR
FORMENTOR	KMPBNXA	Formentor 1.5 TSI 150hp	140 g/km	6.2 l/100km	19.7mg/km	20.00%	€210	€39,100	€40,100
	KMPB5ZA	Formentor 1.5 eTSI 150hp DSG	133 g/km	5.9 l/100km	17.9mg/km	19.25%	€210	€42,000	€43,000
	KMPB5ZA1	Formentor 1.5 eTSI 150hp DSG	136 g/km	5.9 l/100km	17.9mg/km	20.00%	€210	€42,345	€43,345
	KMPBLZA	Formentor 2.0 TDI 150hp DSG	135 g/km	4.8 l/100km	22.6mg/km	19.25%	€210	€44,000	€45,000
	KMPBOYA	Formentor e-Hybrid 204hp DSG	9 g/km	0.4 l/100km	7.5mg/km	7.00%	€140	€49,445	€50,445
VZ	KMPC1YA	Formentor VZ e-Hybrid 272hp DSG	10 g/km	1.5 l/100km	5.4mg/km	7.00%	€140	€58,160	€59,160
	KMPC3TA	Formentor VZ 2.0TSI 333hp DA	198 g/km	8.7 l/100km	18.6mg/km	41.00%	€790	€72,100	€73,100

Optional extras and Irish standard equipment may have an effect on the CO2, NOx and Fuel Economy figures. The CO2, NOx & Fuel Economy figures are the official figures obtained from tests under standardised EU test conditions. Information valid as of: 01.07.2024. Subject to change.

ROTR: Recommended on the road price is RRP including delivery charges of €1,000 as recommended by CUPRA Ireland. Delivery charge includes CUPRA Care Pack which includes: 3 Year Manufacturer Service Plan, Complimentary CUPRA Courtesy Car, Complimentary Collection & Delivery, Complimentary Clean. For more details see [www.cupraofficial.ie](http://www.cupraofficial.ie)

Please note every effort has been made to ensure the contents of this publication (including RRP, CO2, fuel consumption and technical information) were accurate and up-to-date at the time of publishing (20.08.2024). CUPRA Ireland reserves the right to change specification, prices and withdraw products from sale without notice. Any such alternations will be notified to CUPRA Retailers at the earliest opportunity. Please consult your local CUPRA retailer for the latest product information.

# COLOUR

FIORD BLUE - 9K9K (Soft) F vz



MAGNETIC TECH MATT - 9R9R (Matt) F vz



CENTURY BRONZE- L3L3 (Matt) vz



ENCELADUS GREY- Q7Q7 (Matt) vz



GLACIAL WHITE- 2Y2Y (Metallic) F vz



MIDNIGHT BLACK- OE0E (Metallic) F vz



MAGNETIC TECH - S7S7 (Metallic) F vz



GRAPHENE GREY - R6R6 (Special) F vz



PAINT

Standard ■  
Optional ■

# WHEELS



SANDSTORM  
19IN MACHINED SPORT BLACK / SILVER F VZ



SANDSTORM COPPER  
19IN MACHINED SPORT BLACK / COPPER F VZ



ARTIC  
19IN MACHINED SPORT BLACK / SILVER F VZ



ARTIC COPPER  
19IN MACHINED SPORT BLACK / COPPER F VZ



SONORA  
18IN MACHINED SPORT BLACK / SILVER F



HAILSTORM  
19IN FORGED MACHINED SPORT BLACK / SILVER VZ



HAILSTORM COPPER  
19IN FORGED MACHINED SPORT BLACK / COPPER VZ

WHEELS

Standard ■  
Optional ■

# INTERIORS



SHARP AMBIENT - AQ F



DYNAMIC AMBIENT - CG F VZ

# INTERIORS



PROGRESSIVE AMBIENT - KE F VZ



EXTREME AMBIENT - LN VZ

## STANDARD EQUIPMENT

### FORMENTOR

Model	RRP
Formentor 1.5 TSI 150hp	€39,100
Formentor 1.5 eTSI 150hp DSG	€42,000
Formentor 1.5 eTSI 150hp DSG	€42,345
Formentor 2.0 TDI 150hp DSG	€44,000
Formentor e-Hybrid 204hp DSG	€49,445

### EXTERIOR

- SONORA 18" Machined wheels in sport black & silver
- Heat-insulating and tinted rear windows
- Front and rear power windows
- Black roof rails
- Front Full LEDs
- Rear 3D LED lights w/dynamic turn signal & illuminated CUPRA Logo
- Dynamic headlight range control self-adjusting while driving
- Front LED fog lamps with cornering function
- Welcome light in exterior mirrors
- Exterior mirrors, power-folding, adjustable and heated with front passenger exterior mirror lowering function
- Separate daytime running light w/automatic headlight control & coming and leaving home feature
- CUPRA sport suspension

### INTERIOR

- Multi-function sports steering wheel, heated (DSG only) w/ Satellites
- Illuminated CUPRA lettering in door apertures
- Progressive Steering
- Textile sport seats
- CUPRA Drive Profile
- Manually adjustable height and lumbar support for front seats
- Mechanical rear seat release
- Two reading lights up in front and two in the rear
- Climatronic 3 zone air conditioning
- Aluminium Pedals (Automatic Only)
- Black roof cloth
- Heated front seats

### SAFETY

- XDS electronic differential lock with dynamic traction support
- i-Size and top tether child seat anchors in rear and passenger seats
- Front Assist
- Lane Assist
- Intelligent Speed Assist
- Traffic Sign Recognition
- Attention & Drowsiness Assist
- Driver & Passenger Airbags
- Side Airbag, Curtain & Interaction Airbag in Front
- Emergency Steering Support & Turn Assist
- 3-point safety belts for front and rear seats, with visual and acoustic reminder
- Adaptive Cruise Control
- High Beam Control

### TECHNOLOGY

- Keyless Go
- 10.25" Digital cockpit
- 12.9" Infotainment System with Illuminated Sliders
- USB-C data sockets & charging sockets
- 7 Speakers
- Voice Control
- Wireless Android Auto & Apple CarPlay
- DAB Radio
- CUPRA CONNECT
- Wireless Charger & Antenna Amplifier
- Heat reflecting Windshield
- Start - stop system
- Rain & Light sensor
- Front & Rear Parking Sensors





## STANDARD EQUIPMENT

### FORMENTOR VZ

(in addition to Formentor)

Model	RRP
Formentor VZ e-Hybrid 1.5 272 hp DSG	€58,160
Formentor VZ 2.0 TSI 333hp DA	€72,100

### EXTERIOR

- SANDSTORM 19" Machined alloy wheels in sport black and silver

### INTERIOR

- Electric Drivers Seat
- Dinamica bucket seats
- Electric Tailgate & Virtual Pedal

### SAFETY

- Alarm

### TECHNOLOGY

- DCC - Dynamic chassis control
- Rear View Camera
- Keyless Advanced
- Smart Wraparound Interior Lighting

**STANDARD  
EQUIPMENT - VZ**

Images are shown for representative purposes only and may contain optional extras.



# OPTIONAL EQUIPMENT

			FORMENTOR	FORMENTOR VZ	RRP From*
ALLOY WHEELS	SANDSTORM - 19 " wheels Machined in Sport Black/Silver	<b>Z9A</b>	○	S	<b>€351</b>
	SANDSTORM COPPER - 19 "wheels Machined in Sport Black/Copper	<b>Z9E</b>	○	-	<b>€636</b>
			-	○	<b>€468</b>
	ARTIC - 19 "wheels Machined in Sport Black/Silver	<b>Z9C</b>	○	-	<b>€636</b>
			-	○	<b>€351</b>
	ARTIC COPPER- 19 "wheels Machined in Sport Black/Copper	<b>Z9G</b>	○	-	<b>€1,755</b>
			-	○	<b>€1,506</b>
HAILSTORM- 19 "wheels Machined in Sport Black/Silver	<b>Z9I</b>	-	○	<b>€1,269</b>	
HAILSTORM COPPER - 19 " wheels Machined in Sport Black/Copper	<b>Z9M</b>	-	○	<b>€1,590</b>	

			FORMENTOR	FORMENTOR VZ	RRP From*
INTERIOR	Sharp Ambient	<b>AQ</b>	●	-	<b>No Cost</b>
	Dynamic Ambient [Dinamica Bucket Seats]	<b>CG + PS2</b>	○	●	<b>€1,062</b>
	Progressive Ambient [Leather Bucket Seats]	<b>KE + PR2</b>	○	-	<b>€1,972</b>
			-	○	<b>€1,972</b>

			FORMENTOR	FORMENTOR VZ	RRP From*
PAINT FINISHES	Soft Paint	<b>P</b>	●	●	<b>No Cost</b>
	Metallic Paint	<b>M</b>	○	○	<b>€941</b>
	Special Paint	<b>C</b>	○	○	<b>€1,287</b>
	Matt Paint	<b>T</b>	○	○	<b>€2,575</b>

● Standard ○ Optional - Not Available

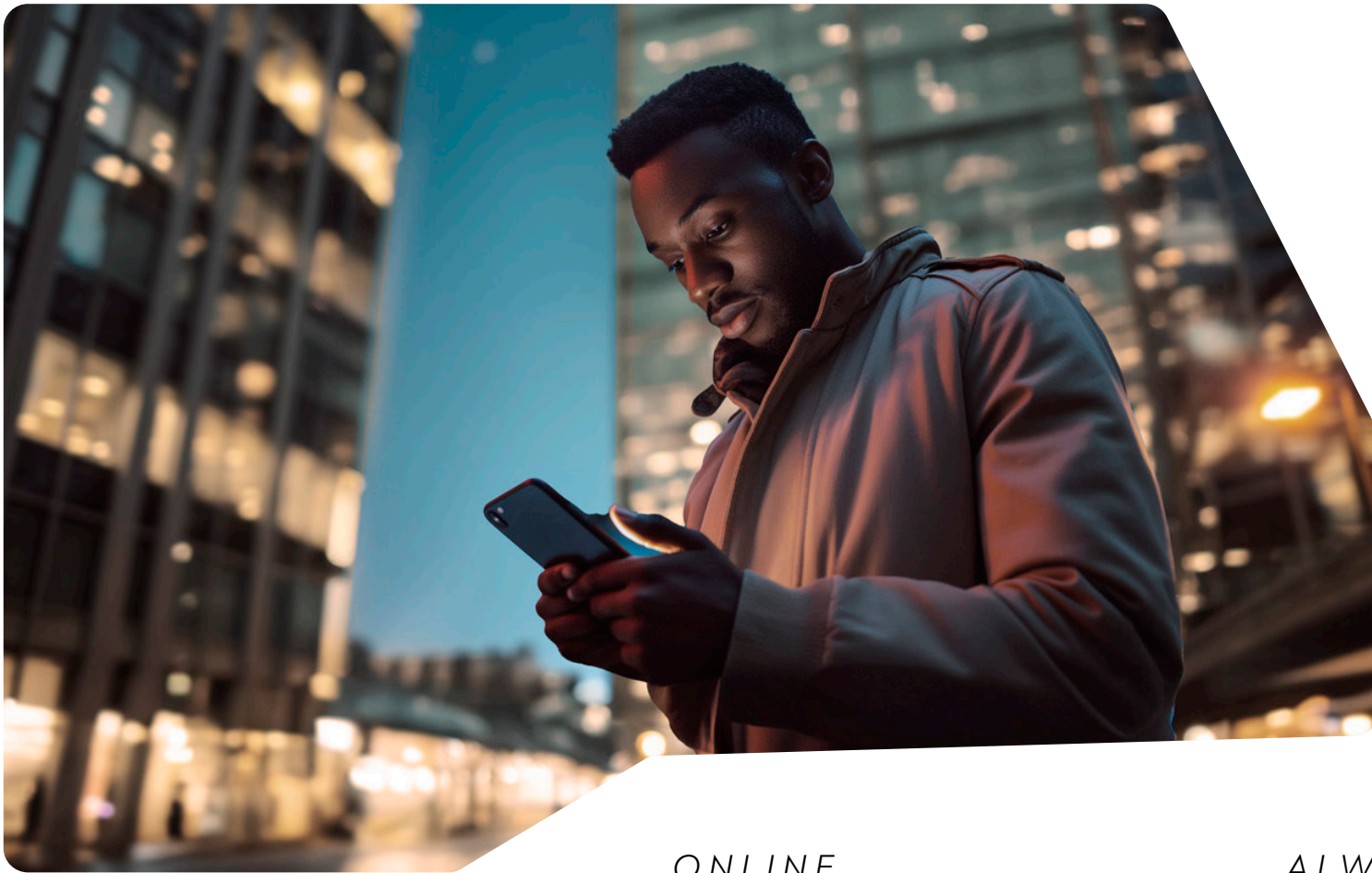
\*RRP From is based on the lowest available VRT rate for that model range, adding options to vehicles with higher VRT rates will cause options to increase in cost. Adding optional extras to vehicles can have an impact on the CO<sub>2</sub> & Fuel Consumption of the vehicle. This may in turn change the VRT payable on the vehicle and thus increase the Total Price. Please discuss the addition of options and their impact with your CUPRA Master within our CUPRA Network. Information & pricing subject to change without notice.

# OPTIONAL EQUIPMENT

		FORMENTOR	FORMENTOR VZ	RRP From*	
SPECIAL ITEMS	<b>Edge Pack:</b> - Keyless Advanced - Alarm - Smart Interior Wraparound Lighting - Rear View Camera - Electric Tailgate & Virtual Pedal	<b>WB1</b>	○	●	<b>€1,664</b>
	<b>Immersive by Sennheiser</b> - 11x Speaker & 1x Subwoofer Premium Sound System	<b>PA1</b>	○	-	<b>€690</b>
		<b>PA2</b>	-	○	
	<b>Pure Performance</b> - Matrix LED Lights - Dynamic Chassis Control (Std VZ)	<b>PP1</b>	○	-	<b>€1,445</b>
		<b>PP2</b>	-	○	<b>€1,112</b>
	<b>Intelligent Drive</b> [Only for Formentor Manual] - Side & Exit Assist - Pre-Crash Assist - Top View Camera - Navigation System [Requires YOS]	<b>PF1</b>	○	-	<b>€1,169</b>
	<b>Intelligent Drive</b> [Only for DSG] - Side & Exit Assist - Pre-Crash Assist - Lane Keeping System Plus, Semi Auto Control in Emergency - Traffic Jam Assist - Top View Camera - Intelligent Park Assist - Navigation System [Requires YOS]	<b>PF2</b>	○	○	<b>€1,978</b>
	<b>Skyline</b> - Panoramic Sunroof	<b>PTC</b>	○	○	<b>€1,262</b>
	Mirrors in Carbon Fibre Black	<b>PFE</b>	○	○	<b>€620</b>
	Mirrors in Carbon Fibre Copper	<b>PFI</b>	○	○	<b>€699</b>
	Towing Preparation	<b>PRP</b>	○	○	<b>€140</b>
	Emergency Spare Wheel (18")	<b>PG6</b>	○	○	<b>€111</b>
	CUPRA CONNECT 3 Years [Required with Intelligent Drive Packs]	<b>YOS</b>	○	○	<b>No Cost</b>

● Standard ○ Optional - Not Available

\*RRP From is based on the lowest available VRT rate for that model range, adding options to vehicles with higher VRT rates will cause options to increase in cost. Adding optional extras to vehicles can have an impact on the CO<sub>2</sub> & Fuel Consumption of the vehicle. This may in turn change the VRT payable on the vehicle and thus increase the Total Price. Please discuss the addition of options and their impact with your CUPRA Master within our CUPRA Network. Information & pricing subject to change without notice.



## *CUPRA CONNECT*

ALWAYS WELL INFORMED WITH CUPRA CONNECT: RECEIVE REAL-TIME TRAFFIC UPDATES AND DIRECTIONS WHILE SEAMLESSLY CONNECTING TO YOUR SMARTPHONE TO UTILISE APPS AND LISTEN TO MUSIC SERVICES ON THE MOVE.

### *REMOTE ACCESS*

Control, track and access the CUPRA Formentor remotely via your computer or mobile app. So, you can stay up to date on driving data and stats from anywhere.

### *ONLINE INFOTAINMENT*

Access real-time traffic updates and directions and listen to Apple Music on the move.

### *ALWAYS BY YOUR SIDE*

In the unlikely event of an accident, the Emergency Assistance function will put you automatically in contact with local emergency services.

*FOR MORE INFORMATION ON CUPRA CONNECT PLEASE VISIT [WWW.CUPRAOFFICIAL.IE](http://WWW.CUPRAOFFICIAL.IE)*

# TECHNICAL SPECIFICATIONS

KMPBNX, KMPB5Z, KMPBLZ & KMPBOY

## ENGINE

	1.5 TSI 150hp (KMPBNXA)	1.5 eTSI 150hp DSG (KMPB5ZA)	2.0 TDI 150hp DSG (KMPBLZA)	e-Hybrid 204hp DSG (KMPBOYA)
Cylinder/Valve (Total)	4/16	4/16	4/16	4/16
Displacement (cc)	1498	1498	1968	1498
Cylinder bore and stroke (mm)	74.5 / 85.9	74.5 / 85.9	81.0/95.5	74.5 / 85.9
Compression ratio	12	12	16	11.5
Maximum power (kW (HP)/rpm)	110(150)/5000-6000	110(150)/5000-6000	110(150)/3000-4200	110(150)/5000-6000
Maximum torque (Nm/rpm)	250/1500-3500	250/1500-3500	360/1600-2750	250/1500-4000
Fuel supply system	TSI Direct Injection	TSI Direct Injection	TSI Direct Injection	TSI Direct Injection
Aspiration	Turbocharged	Turbocharged	Turbocharged	Turbocharged
Fuel type	ROZ 95	ROZ 95	DIESEL	Petrol/Electric

## PERFORMANCE

Maximum speed [km/h]	205	205	205	210
Acceleration 0-100 km/h (s)	9.0	9.0	9.0	7.9

## TRANSMISSION

Gearbox type	Manual	DSG (Automatic)	DSG (Automatic)	DSG (Automatic)
Transmission of drive	Front Wheel Drive	Front Wheel Drive	Front Wheel Drive	Front Wheel Drive

## ELECTRIC SYSTEM

Battery Capacity [kWh]	-	-	-	25.8 (20 net)
Battery Type	-	-	-	Li-ion
Electric Range [km]	-	-	-	126
Charging Time (AC 11kW) 0-100% SoC	-	-	-	2 hrs 30 mins
Charging Time (DC 50kW) 10-80% SoC	-	-	-	26 mins

## WEIGHTS & DIMENSIONS

Length / Width / Height [mm]	4451/1839/1520	4451/1839/1520	4451/1839/1520	4451/1839/1537
Wheelbase [mm]	2679	2679	2679	2679
Boot capacity [l]	450	450	450	345
Fuel tank capacity [l]	50	50	50	40
Max allowable weight [kg]	1960	2000	2000	2190
Max towing weight (unbraked) [kg]	710	740	740	750
Max towing weight (braked - 12%) [kg]	1500	1500	1500	1700

# TECHNICAL SPECIFICATIONS - VZ

KMPC1Y & KMPC3T

## ENGINE

	VZ e-Hybrid 272hp DSG (KMPC1YA)	VZ 2.0 TSI 333hp DA (KMPC3TA)
Cylinder/Valve (Total)	4/16	4/16
Displacement (cc)	1498	1984
Cylinder bore and stroke (mm)	74.5 / 85.9	82.5
Compression ratio	11.5	92.8
Maximum power (kW (HP)/rpm)	130(177)/5500-6000	245(333)/5600-6500
Maximum torque (Nm/rpm)	250/1500-4000	420/2100-5500
Fuel supply system	TSI Direct Injection	TSI Direct Injection
Aspiration	Turbocharged	Turbocharged
Fuel type	Petrol/Electric	ROZ95

## PERFORMANCE

Maximum speed [km/h]	220	250
Acceleration 0-100 km/h (s)	7.2	4.8

## TRANSMISSION

Gearbox type	DSG (Automatic)	DSG (Automatic)
Transmission of drive	Front Wheel Drive	4 Wheel Drive

## ELECTRIC SYSTEM

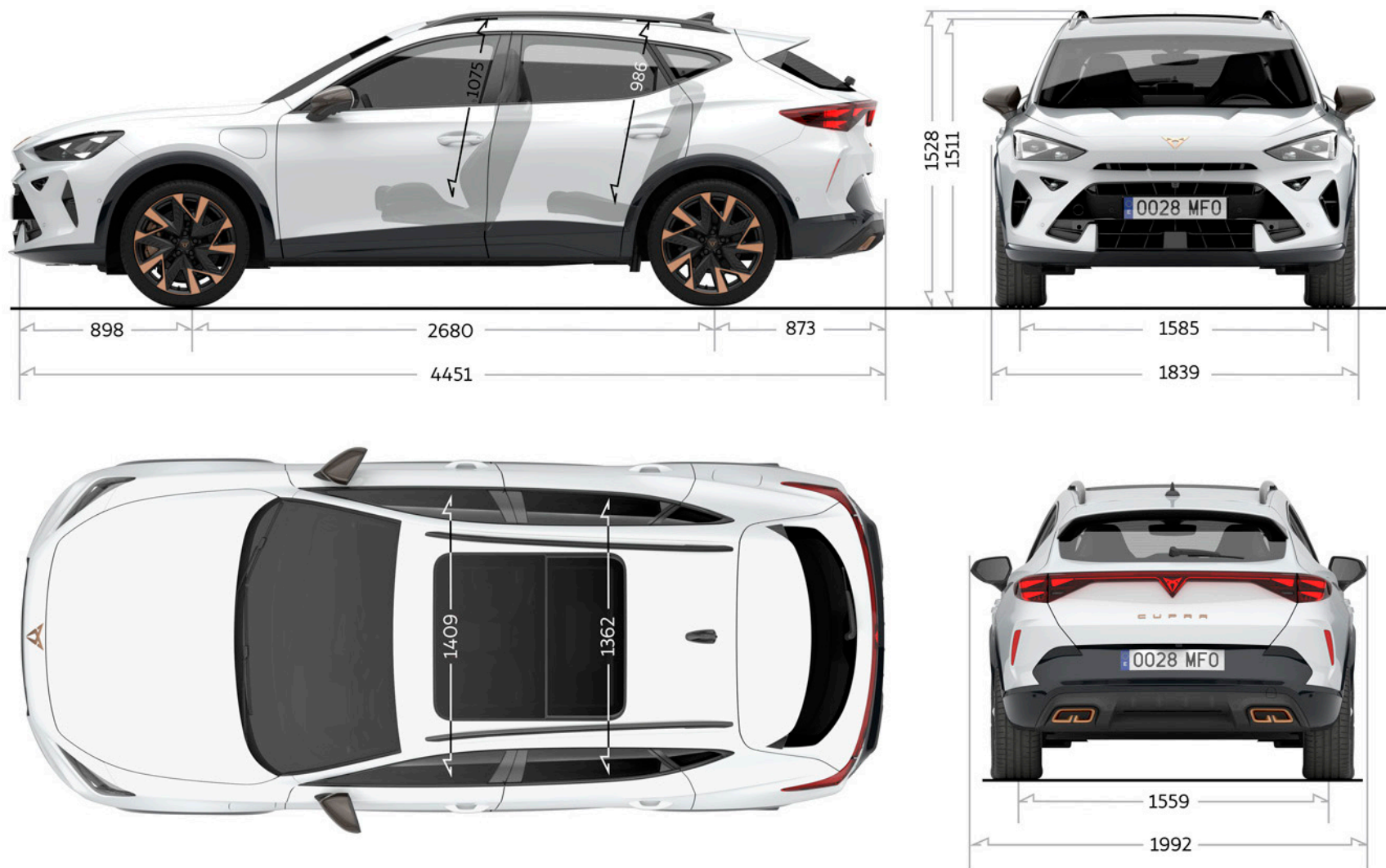
Battery Capacity [kWh]	25.8 (20 net)	-
Battery Type	Li-ion	-
Electric Range [km]	118	-
Charging Time (AC 11kW) 0-100% SoC	2 hrs 30 mins	-
Charging Time (DC 50kW) 10-80% SoC	26 mins	-

## WEIGHTS & DIMENSIONS

Length / Width / Height [mm]	4451/1839/1537	4451/1839/1511
Wheelbase [mm]	2679	2679
Boot capacity [l]	345	420
Fuel tank capacity [l]	40	50
Max allowable weight [kg]	2200	2160
Max towing weight (unbraked) [kg]	750	750
Max towing weight (braked - 12%) [kg]	1700	1700

# TECHNICAL SPECIFICATIONS

## Dimensional Drawing





CUPRA is committed to a policy of continuous product development and reserves the right to make changes to specifications, colours and prices without notice. The information in this product guide can therefore be given as guidance only. While CUPRA makes every effort to ensure that specifications are accurate at the time of publication, you should always check with your authorised CUPRA Partner for the latest information. Due to limitations of the printing process the colours reproduced in this guide may vary slightly from the actual paint colours and material.